

# STUDIOTWENTYSEVEN



## FAYE STOOL BY **ADAM COURT**

UPHOLSTERED IN FABRIC OR LEATHER  
GOLD LACQUER, GUN METAL STAINLESS STEEL, ELECTRO POLISHED STAINLESS STEEL,  
BLACK, SADDLEWOOD, LIGHT GRAY OR WHITE FERROGRAIN POWDERCOATED MILD STEEL FRAME  
PRODUCTION TIME 16-18 WEEKS  
HANDCRAFTED IN PORTUGAL

### FAYE BAR STOOL

IN H 35.4 W 16.5 D 20.5 SH 29.9  
CM H 90 W 42 D 52 SH 76

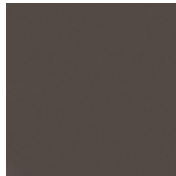
### FAYE COUNTER STOOL

IN H 31.9 W 16.5 D 20.5 SH 26.3  
CM H 81 W 42 D 52 SH 67

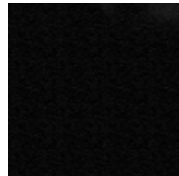
# STUDIOTWENTYSEVEN



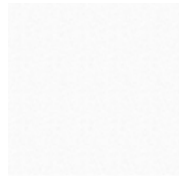
**SADDLEWOOD**  
FERROGRAIN



**LIGHT GREY**  
FERROGRAIN



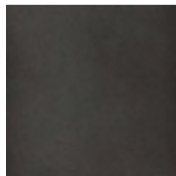
**BLACK**  
FERROGRAIN



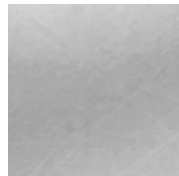
**WHITE**  
FERROGRAIN



**GOLD**  
LACQUER



**GUN METAL**  
STAINLESS STEEL



**ELECTRO POLISHED**  
STAINLESS STEEL