

STUDIOTWENTYSEVEN



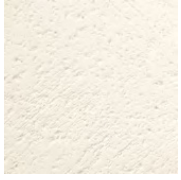
BABA SCONCE AND CEILING LIGHT BY **EMMANUELLE SIMON**

FROSTED GLASS SHADE
CHAMOTTE STONEWARE BASE
PRODUCTION TIME 10-12 WEEKS
MADE IN FRANCE

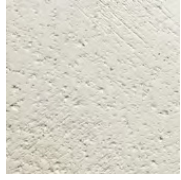
IN D 5.9 Ø 11.8
CM D 15 Ø 30

NEW YORK MIAMI LONDON BY APPOINTMENT ONLY ENQUIRE@STUDIOTWENTYSEVEN.COM WWW.STUDIOTWENTYSEVEN.COM

STUDIOTWENTYSEVEN



01



02



03



04



05



06



FROSTED GLASS