

STUDIOTWENTYSEVEN

RIFT TABLE PLATINUM BY **ANDY KERSTENS**
NUMBERED EDITION
SIGNED, SERIAL NUMBER AND CERTIFICATE OF AUTHENTICITY
RIFT COLLECTION

WHITE WASHED, BLEACHED, SMOKED OR EBONIZED OAK
WEATHERED BRASS, PATINATED BRONZE OR BLACKENED STEEL LEG DETAILS
OPTIONAL FEET IN MATCHING WOOD
PRODUCTION TIME 16-18 WEEKS
HANDCRAFTED IN BELGIUM

RIFT TABLE PLATINUM 240

IN H 29.1 W 94.4 D 39.3
CM H 74 W 240 D 100

RIFT TABLE PLATINUM 320

IN H 29.1 W 125.9 D 41.7
CM H 74 W 320 D 106

RIFT TABLE PLATINUM 450

IN H 29.1 W 177.1 D 44
CM H 74 W 450 D 112



STUDIOTWENTYSEVEN



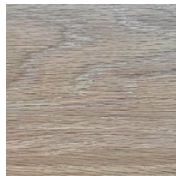
WITH FEET
WOOD



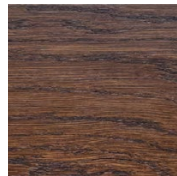
WITHOUT FEET
WOOD



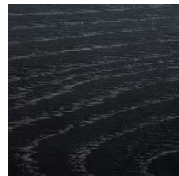
WHITE WASHED
OAK



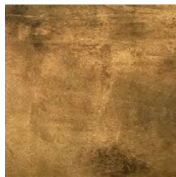
BLEACHED
OAK



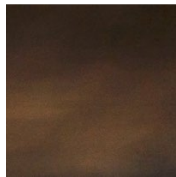
SMOKED
OAK



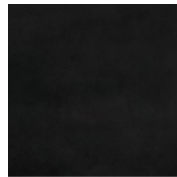
EBONIZED
OAK



WEATHERED
BRASS



PATINATED
BRONZE



BLACKENED
STEEL