

STUDIOTWENTYSEVEN



BABA SCONCE AND CEILING LIGHT BY **EMMANUELLE SIMON**

FROSTED GLASS SHADE
CHAMOTTE STONEWARE BASE
PRODUCTION TIME 18-20 WEEKS
MADE IN BELGIUM

IN D 5.5 Ø 11
CM D 15 Ø 30

NEW YORK MIAMI LONDON BY APPOINTMENT ONLY ENQUIRE@STUDIOTWENTYSEVEN.COM WWW.STUDIOTWENTYSEVEN.COM

STUDIOTWENTYSEVEN



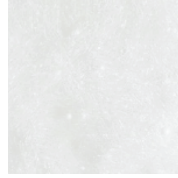
01



02



03



FROSTED GLASS