

STUDIOTWENTYSEVEN

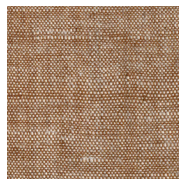


CARLO SOFA BY **PAUL DU PRÉ DE SAINT MAUR** EXCLUSIVELY FOR STUDIOTWENTYSEVEN
NUMBERED EDITION
SIGNED, SERIAL NUMBER AND CERTIFICATE OF AUTHENTICITY
CINQUECENTO COLLECTION

SHOWN IN VOLTERRA WHEAT BY C&C MILANO
RECLAIMED BRUSHED AND OILED OAK FRAME
INTERCHANGEABLE PANELS IN WAXED PARCHMENT, BRASS,
BURL OAK, MARBLE OR UPHOLSTERY
PRODUCTION TIME 10-12 WEEKS
HANDMADE IN FRANCE BY ATELIER BRIMBOIS

IN H 25.6 W 86.6 D 35.4 SH 15
CM H 65 W 220 D 90 SH 38

STUDIOTWENTYSEVEN



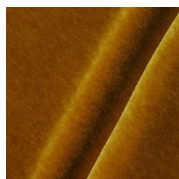
BURGUNDY OCHRE
PERRINE ROUSSEAU



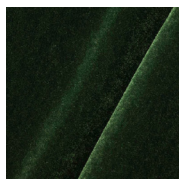
VOLTERRA WHEAT
C&C MILANO



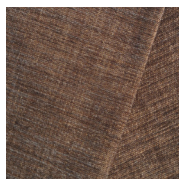
KARAKORUM
DEDAR



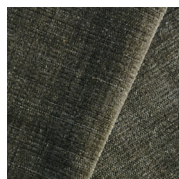
GOLD VELVET
ROSE UNIACKE
AND FORTUNY



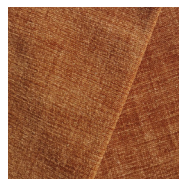
FOREST VELVET
ROSE UNIACKE
AND FORTUNY



WALNUT MOSS
BISSON BRUNEEL



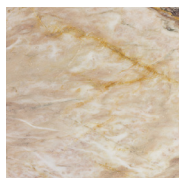
FOREST MOSS
BISSON BRUNEEL



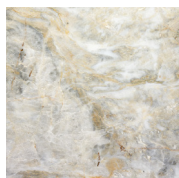
ORANGE MOSS
BISSON BRUNEEL



VERT D'EAU
MARBLE



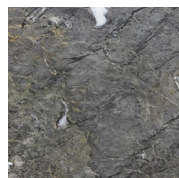
DORÉ
MARBLE



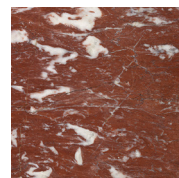
PERLE DE NACRE
MARBLE



VIOLET ROYAL
MARBLE



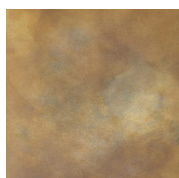
GRIS
MARBLE



ROUGE
MARBLE



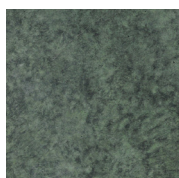
EUGÈNE
PATINATED AND
OILED BRASS



ANDRÉ
PATINATED AND
OILED BRASS



GABRIEL
PATINATED AND
OILED BRASS



AUGUSTE
PATINATED AND
OILED BRASS



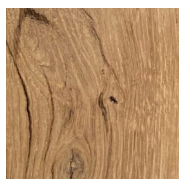
ARMAND
PATINATED AND
OILED BRASS



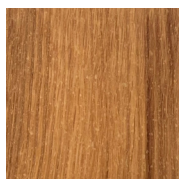
WAXED PARCHMENT
CALFSKIN



BURL OAK
OILED FINISHED



NATURAL FINISH
OAK



OILED FINISH
OAK