

STUDIOTWENTYSEVEN

VIA FLOOR LAMP BY **RÉMI CAPDEPUY** EXCLUSIVELY FOR STUDIOTWENTYSEVEN

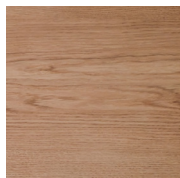
HAND CARVED IN OAK, GRADIENT DARK OAK, BLACK TINT OAK,
MATTE, SATIN, OR SHINY GRAPHITE RESIN, OR MULTI-PIGMENTED SAWDUST RESIN
E27 LED BULB
220-240 V
50-60 HZ
3.4 W, 2700 K
UL LISTED OR CE CERTIFIED
PRODUCTION TIME 6-8 WEEKS
MADE IN FRANCE

IN H 70.9 W 15.8 D 27.6
CM H 180 W 40 D 70

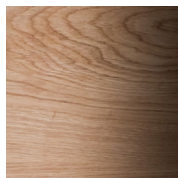
NEW YORK MIAMI LONDON BY APPOINTMENT ONLY ENQUIRE@STUDIOTWENTYSEVEN.COM WWW.STUDIOTWENTYSEVEN.COM



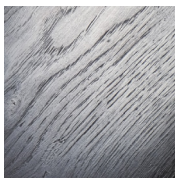
STUDIOTWENTYSEVEN



NATURAL
OAK



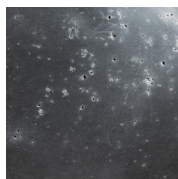
GRADIENT DARK
OAK



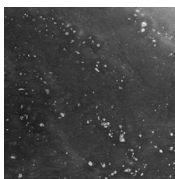
BLACK TINT
OAK



MATTE
GRAPHITE RESIN



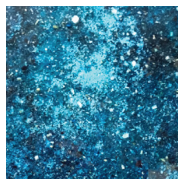
SATIN
GRAPHITE RESIN



SHINY
GRAPHITE RESIN



SIGNATURE FINISH
MULTI-PIGMENTED
SAWDUST RESIN



SIGNATURE FINISH
MULTI-PIGMENTED
SAWDUST RESIN



SIGNATURE FINISH
MULTI-PIGMENTED
SAWDUST RESIN