

STUDIOTWENTYSEVEN

SCARPA 121 CHAIR BY **AFRA & TOBIA SCARPA** 1965

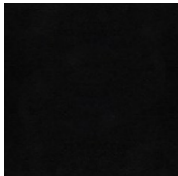
UPHOLSTERED IN CASSINA SADDLE LEATHER
NATURAL OR MOCCA STAINED SOLID ASH FRAME
PRODUCTION TIME 16-18 WEEKS
MADE IN DENMARK

IN H 31.5 W 18.5 D 21.2 SH 17.7
CM H 80 W 46.9 D 53.8 SH 44.9

NEW YORK MIAMI LONDON BY APPOINTMENT ONLY ENQUIRE@STUDIOTWENTYSEVEN.COM WWW.STUDIOTWENTYSEVEN.COM



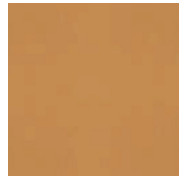
STUDIOTWENTYSEVEN



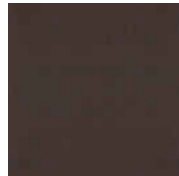
NERO
CASSINA SADDLE
LEATHER



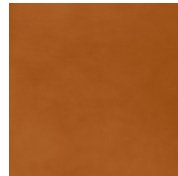
ROSSO BULGARO
CASSINA SADDLE
LEATHER



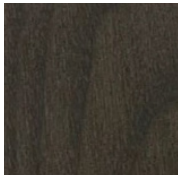
NATURALE
CASSINA SADDLE
LEATHER



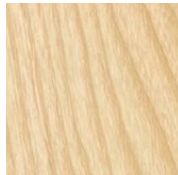
MARRONE
CASSINA SADDLE
LEATHER



COGNAC
CASSINA SADDLE
LEATHER



MOCCA STAINED
ASH



NATURAL
ASH