

# STUDIOTWENTYSEVEN

SCARPA 121 CHAIR BY **AFRA & TOBIA SCARPA 1965**

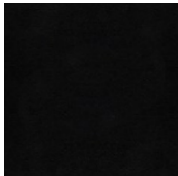
UPHOLESTERED IN CASSINA SADDLE LEATHER  
NATURAL OR MOCCA STAINED SOLID ASH FRAME  
PRODUCTION TIME 6-8 WEEKS  
MADE IN DENMARK

IN H 31.5 W 18.5 D 21.2 SH 17.7  
CM H 80 W 46.9 D 53.8 SH 44.9

NEW YORK MIAMI LONDON BY APPOINTMENT ONLY ENQUIRE@STUDIOTWENTYSEVEN.COM WWW.STUDIOTWENTYSEVEN.COM



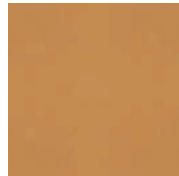
# STUDIOTWENTYSEVEN



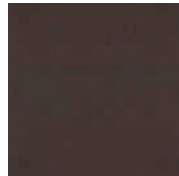
**NERO**  
CASSINA SADDLE  
LEATHER



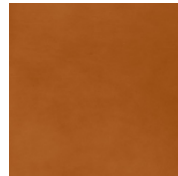
**ROSSO BULGARO**  
CASSINA SADDLE  
LEATHER



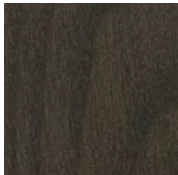
**NATURALE**  
CASSINA SADDLE  
LEATHER



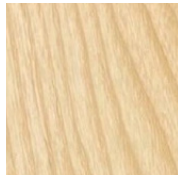
**MARRONE**  
CASSINA SADDLE  
LEATHER



**COGNAC**  
CASSINA SADDLE  
LEATHER



**MOCCA STAINED**  
ASH



**NATURAL**  
ASH