

# STUDIOTWENTYSEVEN



## MESA COFFEE TABLE BY **ADAM COURT**

SALIGNA, CYPRESS OR WIRE BRUSHED CARBON STAINED PINE TOP  
POLISHED ALUMINIUM BASE  
PRODUCTION TIME 16-18 WEEKS  
MADE IN PORTUGAL

IN H 12.6 W 67.3 D 43  
CM H 32 W 170.9 D 109.2

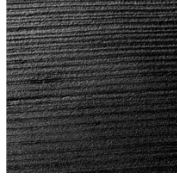
# STUDIOTWENTYSEVEN



**SALIGNA**  
WOOD



**CYPRESS**  
WOOD



**CARBON PINE**  
WOOD