

STUDIOTWENTYSEVEN

HORACE & HOMÈRE TOTEMS BY **GIRODROUX & DELPY** EXCLUSIVELY FOR STUDIOTWENTYSEVEN
LIMITED EDITION 12
SIGNED, SERIAL NUMBER AND CERTIFICATE OF AUTHENTICITY
ANTIQUES STUDIO COLLECTION
YEAR 2023

ELEPHANT SKIN, ANTIQUE BRONZE, EBONY RIDGED, FOSSIL,
PEARLIZED, SIENNE SOIL, OXIDIZED GOLD, HATCHED, 24 K GOLD LEAF
AND GOLD WAXED PATINATED PLASTER
PRODUCTION TIME 16-18 WEEKS
MADE IN FRANCE

HOMÈRE TOTEM

IN H 55.1 Ø 15.7
CM H 140 Ø 40

HORACE TOTEM

IN H 78.7 Ø 15.7
CM H 200 Ø 40



STUDIOTWENTYSEVEN



ELEPHANT SKIN
PLASTER



ANTIQUE BRONZE
PLASTER



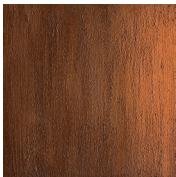
EBONY RIDGED
PLASTER



FOSSIL
PLASTER



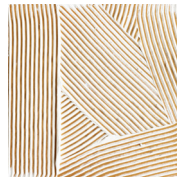
PEARLIZED
PLASTER



SIENNE SOIL
PLASTER



OXIDIZED GOLD
PLASTER



HATCHED
PLASTER



24K GOLD LEAF
PLASTER



GOLD WAXED
PLASTER