

STUDIOTWENTYSEVEN

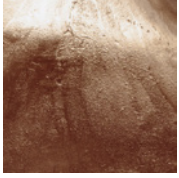


LAMENTO CHANDELIER BY **CLÉMENT THEVENOT** EXCLUSIVELY FOR STUDIOTWENTYSEVEN
LIMITED EDITION 8+4 AP
SIGNED, SERIAL NUMBER AND CERTIFICATE OF AUTHENTICITY
ARCHIPEL COLLECTION
YEAR 2024

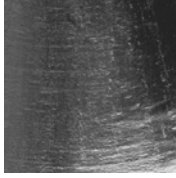
MATTE SANDBLASTED, WHITE OPALINE
OR WHITE PATTERNED GLASS BLOWN SHADES
RAW AND POLISHED, NICKEL, ANTIQUE PATINATED OR
BLACK PATINATED TEXTURED BRONZE STRUCTURE
24V STRIP LED
220V OR 110V
2700K, 3000K OR 4000K
PRODUCTION TIME 20-22 WEEKS
MADE IN FRANCE

IN H 79.5 Ø 59.9
CM H 202.1 Ø 152.3

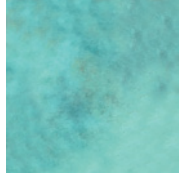
STUDIOTWENTYSEVEN



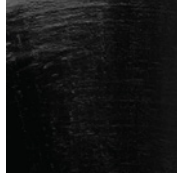
**RAW & POLISHED
BRONZE**



**NICKEL
BRONZE**



**ANTIQUÉ PATINATED
BRONZE**



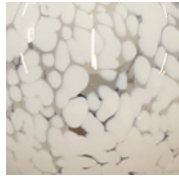
**BLACK PATINATED
BRONZE**



**MATTE SANDBLASTED
GLASS**



**WHITE OPALINE
GLASS**



**WHITE PATTERNED
GLASS**