

STUDIOTWENTYSEVEN

AMAZONA LOUNGE CHAIR BY **JESSICA GERSTEN** EXCLUSIVELY FOR STUDIOTWENTYSEVEN
LUSITANO COLLECTION
YEAR 2024

UPHOLSTERED IN CREAM SKERRY BY OSBORNE & LITTLE,
QUASINERO OR CASTORO ADORABILE ALPACA BY DEDAR
NATURAL OR STAINED OAK LEGS
HORSE HAIR BACK DETAIL
PRODUCTION TIME 14-16 WEEKS
MADE IN PORTUGAL

IN H 24.8 W 32 D 35.9 SH 12.9
CM H 63 W 81.3 D 91.4 SH 33

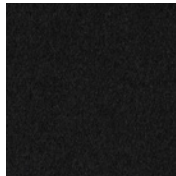
NEW YORK MIAMI LONDON BY APPOINTMENT ONLY ENQUIRE@STUDIOTWENTYSEVEN.COM WWW.STUDIOTWENTYSEVEN.COM



STUDIOTWENTYSEVEN



F6930-05 CREAM
SKERRY



001 QUASINERO
ADORABILE ALPACA



006 CASTORO
ADORABILE ALPACA