

STUDIOTWENTYSEVEN

CAVALO DAYBED BY **JESSICA GERSTEN** EXCLUSIVELY FOR STUDIOTWENTYSEVEN
LUSITANO COLLECTION
YEAR 2024

UPHOLSTERED IN CREAM SKERRY BY OSBORNE & LITTLE,
QUASINERO OR CASTORO ADORABILE ALPACA BY DEDAR
NATURAL OR STAINED OAK FRAME
HORSE HAIR BACK DETAIL
PRODUCTION TIME 14-16 WEEKS
MADE IN PORTUGAL

IN H 26.7 W 73.6 D 37 SH 15.3
CM H 68 W 187 D 94 SH 39

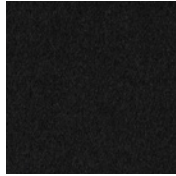
NEW YORK MIAMI LONDON BY APPOINTMENT ONLY ENQUIRE@STUDIOTWENTYSEVEN.COM WWW.STUDIOTWENTYSEVEN.COM



STUDIOTWENTYSEVEN



F6930-05 CREAM
SKERRY



001 QUASINERO
ADORABILE ALPACA



006 CASTORO
ADORABILE ALPACA