

STUDIOTWENTYSEVEN

CRINA CHAIR BY **JESSICA GERSTEN** EXCLUSIVELY FOR STUDIOTWENTYSEVEN
LUSITANO COLLECTION
YEAR 2024

UPHOLSTERED IN CREAM SKERRY BY OSBORNE & LITTLE,
QUASINERO OR CASTORO ADORABILE ALPAÇA BY DEDAR
NATURAL OR STAINED OAK LEGS
HORSE HAIR BACK DETAIL
PRODUCTION TIME 14-16 WEEKS
MADE IN PORTUGAL

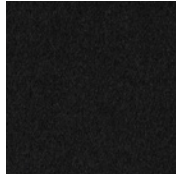
IN H 32.9 W 19.2 D 23.7 SH 17.9
CM H 83.8 W 48.8 D 60.2 SH 45.7



STUDIOTWENTYSEVEN



F6930-05 CREAM
SKERRY



001 QUASINERO
ADORABILE ALPACA



006 CASTORO
ADORABILE ALPACA