

STUDIOTWENTYSEVEN

SALTO OTTOMAN BY **JESSICA GERSTEN** EXCLUSIVELY FOR STUDIOTWENTYSEVEN
LUSITANO COLLECTION
YEAR 2024

UPHOLSTERED IN CREAM SKERRY BY OSBORNE & LITTLE,
QUASINERO OR CASTORO ADORABILE ALPACA BY DEDAR
NATURAL OR STAINED OAK BASE
HORSE HAIR DETAIL
PRODUCTION TIME 14-16 WEEKS
MADE IN PORTUGAL

IN H 17.9 W 20 D 20
CM H 45.7 W 50.8 D 50.8

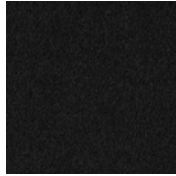
NEW YORK MIAMI LONDON BY APPOINTMENT ONLY ENQUIRE@STUDIOTWENTYSEVEN.COM WWW.STUDIOTWENTYSEVEN.COM



STUDIOTWENTYSEVEN



F6930-05 CREAM
SKERRY



001 QUASINERO
ADORABILE ALPACA



006 CASTORO
ADORABILE ALPACA