

# STUDIOTWENTYSEVEN



A BRAS OUVERTS ARMCHAIR BY **MATTHIEU RECOPE DE TILLY** EXCLUSIVELY FOR STUDIOTWENTYSEVEN  
NUMBERED EDITION  
SIGNED, SERIAL NUMBER AND CERTIFICATE OF AUTHENTICITY  
YEAR 2026

UPHOLSTERED IN CHESTNUT, CREAM OR WHITE SIERRA BY INATA ALPACA  
BRUSHED OAK, BROWN OR BLACK LACQUERED FRAME  
PRODUCTION TIME 14-16 WEEKS  
HANDCRAFTED IN FRANCE BY ATELIERS SAINT-JACQUES FOUNDATION & SIEGEAIR

IN H 30.3 W 31.6 D 35.4 SH 17.7  
CM H 77 W 80.5 D 90 SH 45

# STUDIOTWENTYSEVEN



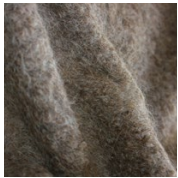
**CHESTNUT & BROWN**  
SIERRA AND LACQUER



**CREAM & BLACK**  
SIERRA AND LACQUER



**CREAM & BRUSHED OAK**  
SIERRA AND WOOD



**CHESTNUT**  
SIERRA BY INATA



**CREAM**  
SIERRA BY INATA



**WHITE**  
SIERRA BY INATA